

think**3D**

 FLASHFORGE
3D PRINTER

HUNTER

DIGITAL
LIGHT
PROCESSING
3D PRINTER





PARAMETERS

Build Volume: 4.72" x 2.66" x 5.91" (120 x 67.5 x 150mm)
Pixel Size X, Y: 0.0025" (62.5µm)
Layer Resolution: 0.0005"/ 0.0010"/ 0.0020" (12.5 / 25 / 50µm)
Light Source: 405nm LED
File Input: STL
Machine Size: 14.17" x 12.20" x 22.24" (360 x 310 x 565mm)
Weight: 17.8kg (39.24lbs)
Power: 100-240V, 50-60Hz, 1A
Software: FlashPrint
Connectivity: USB Stick / USB Cable / WIFI



LIGHT ENGINE

Self-developed proprietary light engine with FHD 1080p resolution and 50,000 hours life span.

LIGHT INTENSITY CONTROL

The unique closed-loop feedback light intensity control system ensures sustained and stable LED intensity, enabling stronger stability and finer print details.



LINEAR MOTION GUIDE ACTUATOR

Industrial Z axis LM guide actuator module enables an accuracy of micron, achieving smoother printing surface.



FEP VAT FILM•



ALUMINIUM RESIN VAT FEP VAT FILM

**LONG SERVICE LIFE
EASY REPLACEMENT**

Easily dismount resin vat for the change of material to ensure little material waste.

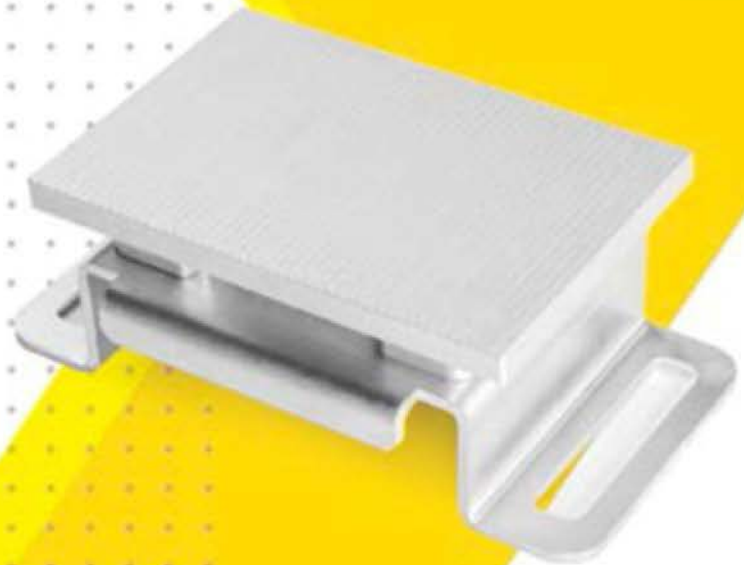
Durable aluminium resin vat requires no maintenance. The long service life FEP vat film can be easily replaced and thus low acquisition cost.

BUILD PLATE

**DURABLE
NO CALIBRATION
QUICK REPLACEMENT**

The build plate can be replaced quickly and there is no need for calibration.

That is faster printing speed and easier to do post treatment.





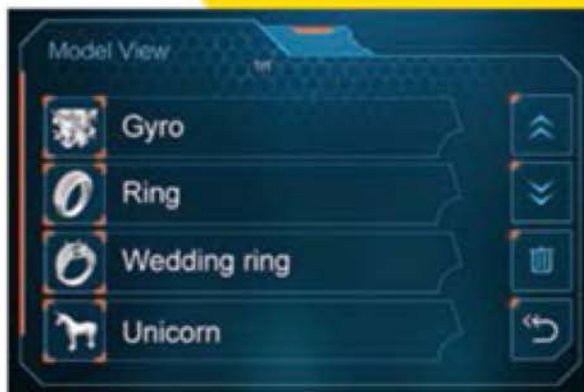
CONNECTIVITY

Multiple connectivities,
more convenience.



TOUCH SCREEN

Simple and intuitive user interface that is
super easy to use.



ADVANCED MAINBOARD DESIGN

Advanced architecture mainboard and self-developed proprietary light engine work together perfectly.

Dual-core 800MHZ ARM processor ensures high-performance and better user experience.

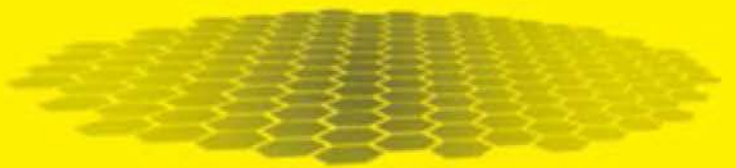
The mainboard is designed and made in 10-layer high precision board, safeguarding EMC, the integrity and the stability of the projection signal.



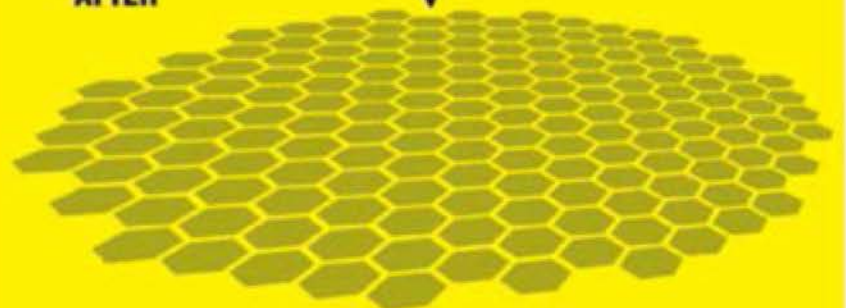
LIGHT INTENSITY UNIFORMITY

Light engine with calibrated luminous intensity uniformity ensures evenly distributed luminous intensity for the projection.

BEFORE

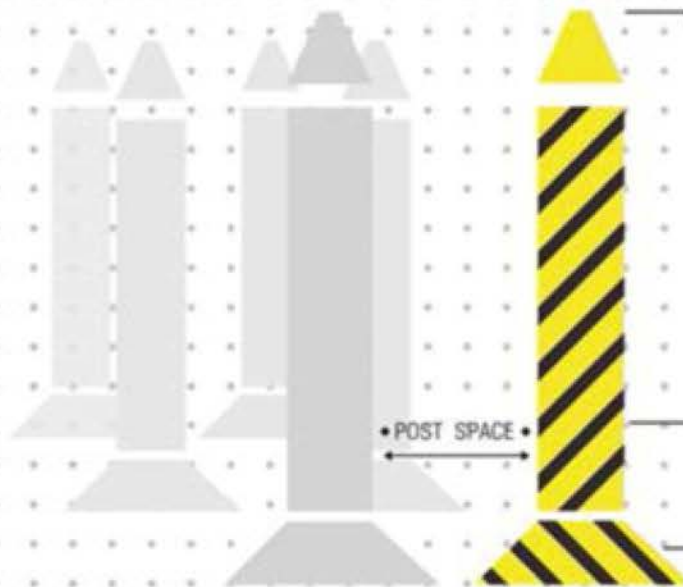


AFTER



JEWELRY SUPPORT MODE

Support mode catered for jewelry and accessories. Advanced settings for more flexible support structures.



- TIP DIAMETER
- POST DIAMETER
- BASE HEIGHT
- BASE DIAMETER

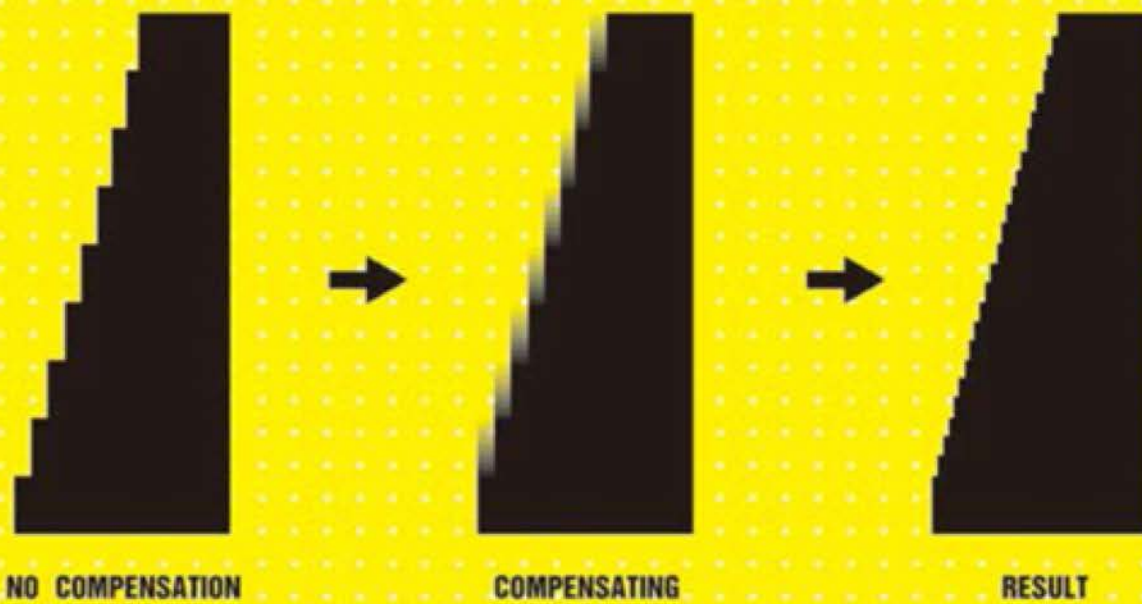


BUILT-IN RESIN SETTINGS

Default printing parameters for different types of resin are built in the slicing software. Choose one of the defaults to start printing right away or modify parameters for advanced settings.

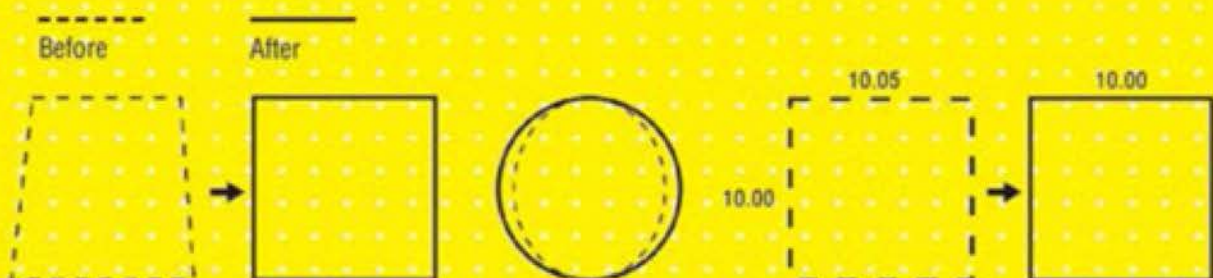
GRAY COMPENSATION ALGORITHM

Gray compensation algorithm enables smoother model surface.



DISTORTION CORRECTION ALGORITHM

Distortion correction algorithm ensures higher dimensional accuracy of the prints.



luxaprint® 3D shell BIO-COMPATIBLE RESIN

DETAX
Chemistry with passion

Appearance	Skin
Density (g/cm ³)	1.1
Critical Exposure Ec (mJ/cm ²)	6-13 mJ/cm ²

ISO 10993 BIOCOMPATIBILITY CERTIFIED
EN ISO 13485 MEDICAL DEVICES STANDARD COMPLIANT
ISO 13485 : 2003 STANDARD VERIFIED



FH1400

TOUGH RESIN

Appearance	Blue
Density (g/cm ³)	1.1
Viscosity (cps)	359 cps (25°C)
Critical Exposure Ec (mJ/cm ²)	15-18 mJ/cm ²
Penetration Depth (dp)	0.1 mm



COMPATIBLE THIRD PARTY RESIN BRANDS

MadeSolid / Ackuretta Materials / Unishape



HEARING AID



DENTAL



JEWELRY

INDIA HEAD OFFICE

Daksha Online Services Pvt Ltd
401, Aruna Towers, 6-3-661/10/1&2
Sangeet Nagar, Somajiguda
Hyderabad, Telangana - 500082
Ph: +91-40-3091 1007

SINGAPORE OFFICE

think3D Labs Pte Ltd
10 Anson Road, #10-11
International Plaza
Singapore (079903)
Ph: +65-62252028

OUR BRANCH OFFICES**DELHI**

think3D
c/o 91SpringBoard
E-43/1, Okhla Phase II
New Delhi
Delhi - 110020
Ph: (011) 3958 5958

MUMBAI

think3D
c/o The Playce
1st Floor, Marathon Maxima
Lal Bahadur Shastri Marg
Mulund West, Mumbai
Maharashtra 400080
Ph: (022) 3372 1372

CHENNAI

think3D
Startup Centre and Management Pvt Ltd
#8 First Seaward Road, Valmiki Nagar
Thiruvanmiyur, Chennai
Tamil Nadu 600041, India
Ph: (044) 3083 3583

BANGALORE

think3D
c/o Alpha Lab /C
1316, 9th Cross Rd
2nd Phase, J P Nagar
Bengaluru, Karnataka 560078
Ph: (080) 3951 3950

KOLKATA

think3D
31, Jodhpur Gardens
4th Floor
Flat No: G8
Kolkata
West Bengal - 700045
Ph: 033-79415085

COIMBATORE

think3D
Site No. 51st Cut
Kurunthachal Nagar
K. Vadamadurai Post
Coimbatore
Tamil Nadu - 641017
Ph: +91-9944227616

VIZAG

think3D
c/o SG Automobiles, Ground floor
1-56-15 (HIG-67), Sector-1
MVP Colony, Vishakapatnam
Andhra Pradesh, India
PIN Code: 530017
Ph: 0891-2707830

RAIPUR

think3D
#601, 6th floor, Block A1,
Dolphin Impress Apartment
Vidhan Sabha Road
Near Mowa Bridge
Raipur, Chhattisgarh 492001
Ph: 9993711113